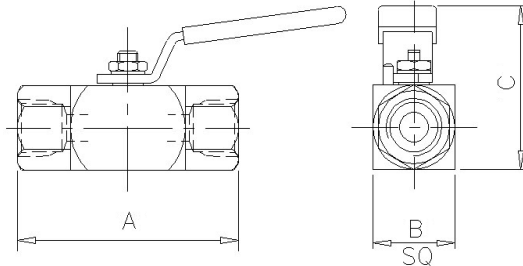


Product Data Sheet

B6F Type Ball Valve



The 'B6' Type Single Isolating Ball Valve is designed for safe and reliable isolation giving bubble tight shut off. Totally enclosed soft seats offer both positive sealing and low operating torques, from vacuum to high-pressure service. Anti-blow out spindle is fitted as standard with the option of PTFE or Grafoil seals.

Part No.	Connections Size	A	B	C	Weight (Kgs)
B6FX25	1/4"	2.4	1.3	2.5	0.4
B6FX38	3/8"	2.4	1.3	2.5	0.4
B6FX50	1/2"	3.4	1.3	2.5	0.5
B6FY75	3/4"	4.1	1.5	3.0	1.1
B6FZ10	1"	4.8	2.0	3.5	1.9

Key Features of the Oliver Ball Valve range

- Enclosed soft seats giving positive sealing and low torque operation across the pressure range
- One-piece spindle with anti-blowout shoulder that maintains seal integrity at all pressures
- Precision machined ball for smooth operation through 90 degrees to give straight through bore
- Either PTFE or Grafoil spindle and body seals to give high body integrity
- 316 stainless steel one-piece handle

Standard Specification

Pressure: 6000psi	Seals: PTFE	Seats: PTFE/PVDF, PTFE/KEL-F or PEEK	
Temp: 120 deg C (PTFE/PVDF) or 200 deg C (PTFE/KEL-F and PEEK)		Thread form: NPT	Handle: Lever

Ordering Code

(Typical example) →	B6FX	50	S	/	BT	/	FS
Type							
B6 = Ball valve 6000 psi							
F = Female x Female							
X = 10mm bore							
Y = 14mm bore							
Z = 20mm bore							
Size (bore sizes available)							
25 - 1/4" (X=10mm)	75 - 3/4" (Y=14mm/Z=20mm)						
38 - 3/8" (X=10mm)	10 - 1" (Z=20mm)						
50 - 1/2" (X=10mm/Y=14mm)							
Material							
S - 316S31 Stainless Steel	HC - Hastalloy C276						
M - Monel (400)	(Others available)						
Optional Connections (NPT Standard)							
BT - BSP Taper							
BP - BSP Parallel (top sealing)							
SW - Socket Weld							
Options							
FS - Firesafe to BS6755 Pt2/API 607 Rev4	OH - Oval Handle						
HL - Handle Locking	PE - Pinned End Connectors (prevents accidental removal)						
KF - PTFE/Kel-F seats (10mm only)	PMHB - 4 x M5 mounting holes in base for panel mounting						
NA - NACE MR-01-75 (latest revision)	PMHT - 4 x M5 mounting holes in top for panel mounting						