

■ Universal Joint

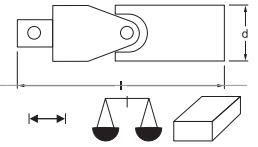


- With ball locking device
- For hand-operated sockets and adapters
- With square drive as per DIN 3120 - A 10 and C 10 / ISO 1174
- Standards: DIN 3123 / ISO 3316

- Material: Chrome Vanadium
- Surface: Super-Chrom

3/8 10 mm 3/8 10 mm

| Art. Code | mm | " | mm | " | d mm | l mm | g | |
|-----------|----|-----|----|-----|------|------|----|----|
| 3068 0001 | 10 | 3/8 | 10 | 3/8 | 19 | 55 | 75 | 10 |



■ Reducer

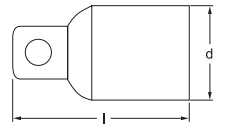


- With ball locking device
- For hand-operated sockets and adapters
- With square drive as per DIN 3120 - C 10 and A 6.3 / ISO 1174

- Standards: DIN 3123 / ISO 3316
- Material: Chrome Vanadium
- Surface: Super-Chrom

1/4 6.3 mm 3/8 10 mm

| Art. Code | mm | " | mm | " | d mm | l mm | g | |
|-----------|-----|-----|----|-----|------|------|----|----|
| 3082 0001 | 6,3 | 1/4 | 10 | 3/8 | 17 | 27 | 30 | 10 |



■ Converter

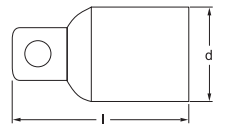


- With ball locking device
- With non-slip cross knurling
- For hand-operated sockets and adapters
- With square drive as per DIN 3120 - C 10 and A 12.5 / ISO 1174

- Standards: DIN 3123 / ISO 3316
- Material: Chrome Vanadium
- Surface: Super-Chrom

1/2 12.5 mm 3/8 10 mm

| Art. Code | mm | " | mm | " | d mm | l mm | g | |
|-----------|------|-----|----|-----|------|------|----|----|
| 3083 0001 | 12,5 | 1/2 | 10 | 3/8 | 18 | 35 | 40 | 10 |



■ Bit Adapter



- For inserting bits with hexagon shank
- With spring clip
- With hexagon socket acc. to DIN 3126 and inner square acc. to DIN 3120 - C 10

- Standards: DIN 3126 / 3120
- Material: Chrome Vanadium
- Surface: Super-Chrom

1/4 6.3 mm 3/8 10 mm

| Art. Code | mm | " | mm | " | d mm | l mm | g | |
|-----------|----|-----|-----|-----|------|------|----|----|
| 3084 0001 | 10 | 3/8 | 6,3 | 1/4 | 17 | 30 | 50 | 10 |

