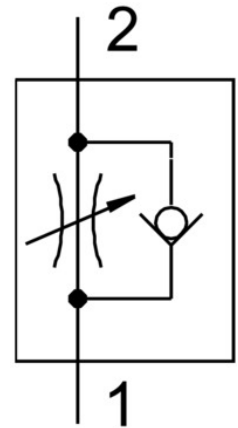
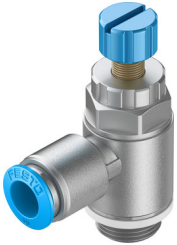


# One-way flow control valve GRLA-3/8-QS-10-RS-D

Part number: 534343

FESTO



## Data sheet

| Feature   | Value  |
|---|--|
| Valve function  | Flow control non-return function                                   |
| Pneumatic connection 1                                  | QS-10  |
| Pneumatic connection 2                                  | G3/8   |
| Adjusting element                                       | Knurled screw  |
| Type of mounting  | Screw-in<br>With external thread                                   |
| Standard nominal flow rate in flow control direction    | 900 l/min  |
| Standard nominal flow rate in non-return direction      | 540 l/min ... 975 l/min  |
| Operating pressure                                      | 0.2 bar ... 10 bar   |
| Ambient temperature                                     | -10 °C ... 60 °C   |
| Maritime classification                                 | See certificate  |
| Mounting position                                       | Any  |
| Symbol  | 00991452   |
| Operating pressure for entire temperature range         | 0.2 bar ... 10 bar   |
| Standard flow rate in flow control direction 6 → 0 bar  | 1400 l/min   |
| Standard flow rate in non-return direction at 6 → 0 bar | 1160 l/min ... 1620 l/min  |
| Operating medium  | Compressed air as per ISO 8573-1:2010 [7:4:4]                      |
| Information on operating and pilot media                | Operation with oil lubrication possible (required for further use) |
| LABS (PWIS) conformity                                  | VDMA24364-B1/B2-L  |
| Storage temperature                                     | -10 °C ... 40 °C   |
| Temperature of medium                                   | -10 °C ... 60 °C   |
| Nominal tightening torque                               | 10 Nm  |
| Product weight  | 72 g   |
| Note on materials                                       | RoHS-compliant   |
| Seals material  | NBR  |
| Hollow bolt material                                    | Wrought aluminum alloy<br>Anodized                                 |
| Releasing ring material                                 | POM  |

| <b>Feature</b>              | <b>Value</b>                       |
|-----------------------------|------------------------------------|
| Knurled head material       | Wrought aluminum alloy<br>Anodized |
| Material of adjusting screw | High-alloy stainless steel         |
| Swivel joint material       | Die-cast zinc                      |